

SGPC-2400



Deployment and troubleshooting



(figure 1)

1. Inverter and breakers
2. Combiner Box
3. Charge Controller
4. MATE3 (the digital controller of your SGPC-2400)
5. USB Charger (back end)
6. 12v Distribution block (for interior lights, fans, and usb charger)
7. 20A light inline fuse
8. 40A actuator inline fuse

PLACEMENT GUIDE

Before you proceed make sure your box is aligned in the proper manner, with the panel sides of the box facing solar north and south.

Solar south in the middle east is currently about 15 degrees west of magnetic south, which you can find with the included compass.

(figure 2)



QUICK DEPLOYMENT GUIDE



(figure 3)



(figure 4)

1. Turn on breakers shown in figure one from bottom to top. (figure 3)
2. Remove combiner box cover plate with philips head screwdriver. (figure 4)
3. Flip breakers inside combiner box and replace cover plate.



(figure 5)



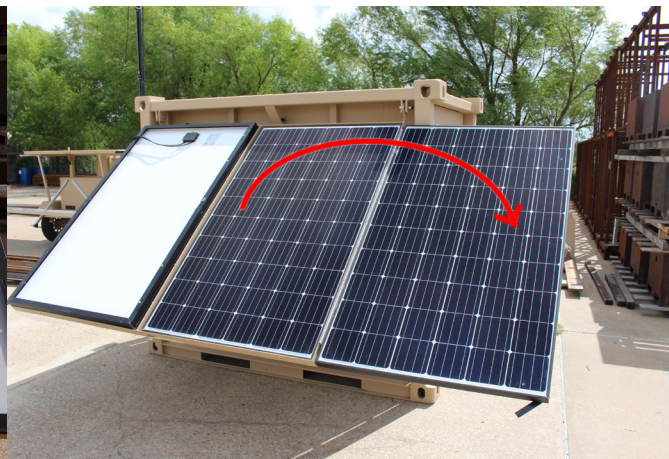
(figure 6)

4. Release the wing lock on both sides of the exterior of the SGPC-2400. (figure 5)
5. Use the control box to raise both panels to the first pinhole. (figure 6)

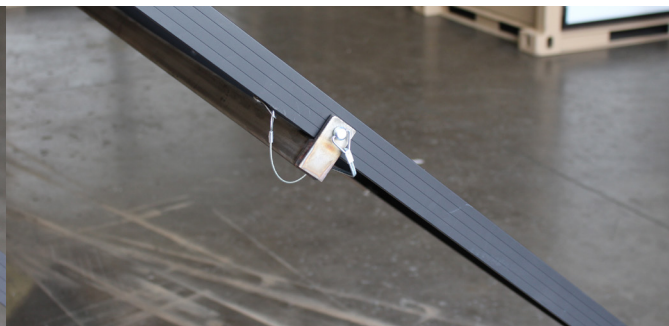


6. Deploy the outriggers on the wings

7. Fold out solar panels on each wing



8. Lock panels into place with outrigger pins



9. Raise Both wings up to the second pin hole, where they should be flat like below.



10. Open the mast side of the box and open up the roof flaps.



11. position the lights in the fashion you need

12. Use the wench to crank the light mast up.



13. Turn light mast to the position you want

14. Close roof flaps around Mast

Your Power Cube is now fully deployed.



To ensure that everything on your SGPC-2400 is charging correctly, check the top bar on your MATE3. If there is currently sunlight outside, it should be charging like the picture shown above.

Light Timer Set-up

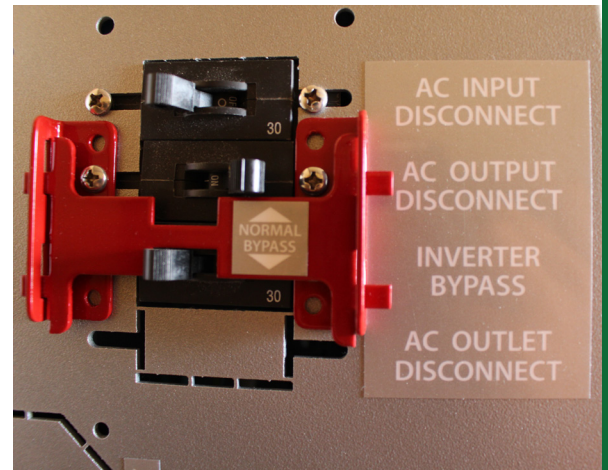
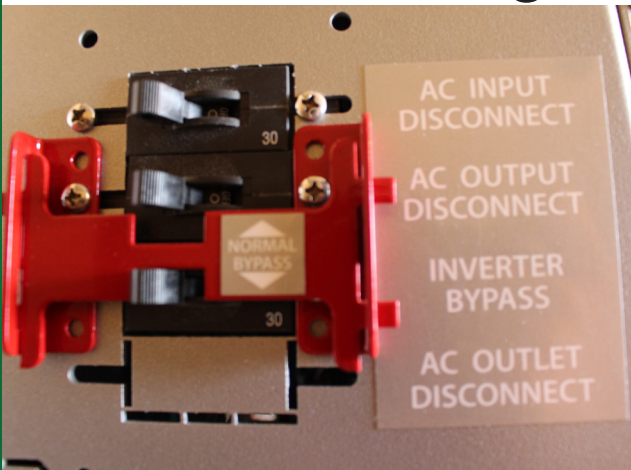
1. While holding the Clock button, press the DAY key, HOUR key, MIN key, respectively to adjust time. Set the current day and time.



2. Press the TIMER button, Cycle to the time you would like the lights to turn ON using the DAY, HOUR, and MIN keys.
3. Press the TIMER button again and cycle to the time you would like to turn the lights OFF
4. Press the CLOCK button to return the device to displaying the current time.

The Timer is now set.
(to manually cycle the lights ON/OFF, press the manual button)

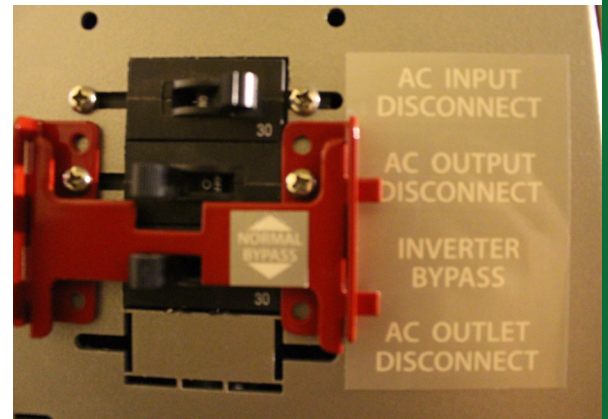
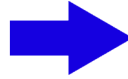
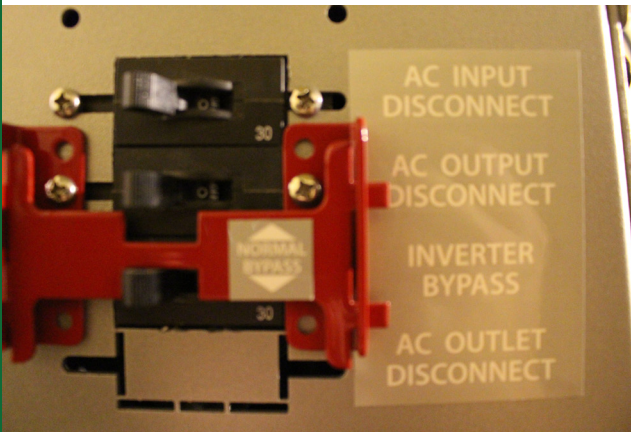
Enabling the Extension Cord



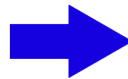
Flip the switch labeled AC OUTPUT DISCONNECT located on the top left side of the inverter.

The extension cord is now ready for use.

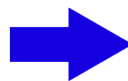
USING THE GENERATOR



1. Flip the switch labels AC INPUT DISCONNECT located on the top left side of the inverter forward.
2. Plug in the AC Input cable on the mast side of the box into the generator



3. Start the Generator
4. On the MATE3 in the battery side of the box, press the blinking 'AC INPUT' button.
5. Make sure the 'AC Input Mode' is set to 'use' by pressing the 'use' button
6. Go back to the main menu by pressing the 'back' button.



TROUBLESHOOTING

Problem: The Lights aren't turning on.

Solution 1: Check that the switch on the back of the light head* is turned on.



Solution 2: Check the light fuse shown in figure 1 on page 2. If the fuse is blown replace it with one of the spares provided in the folder**

*only lights before included before the SMS70 series have switches on the back.

**Only boxes after Serial# 380 have fuses included in the folder.